

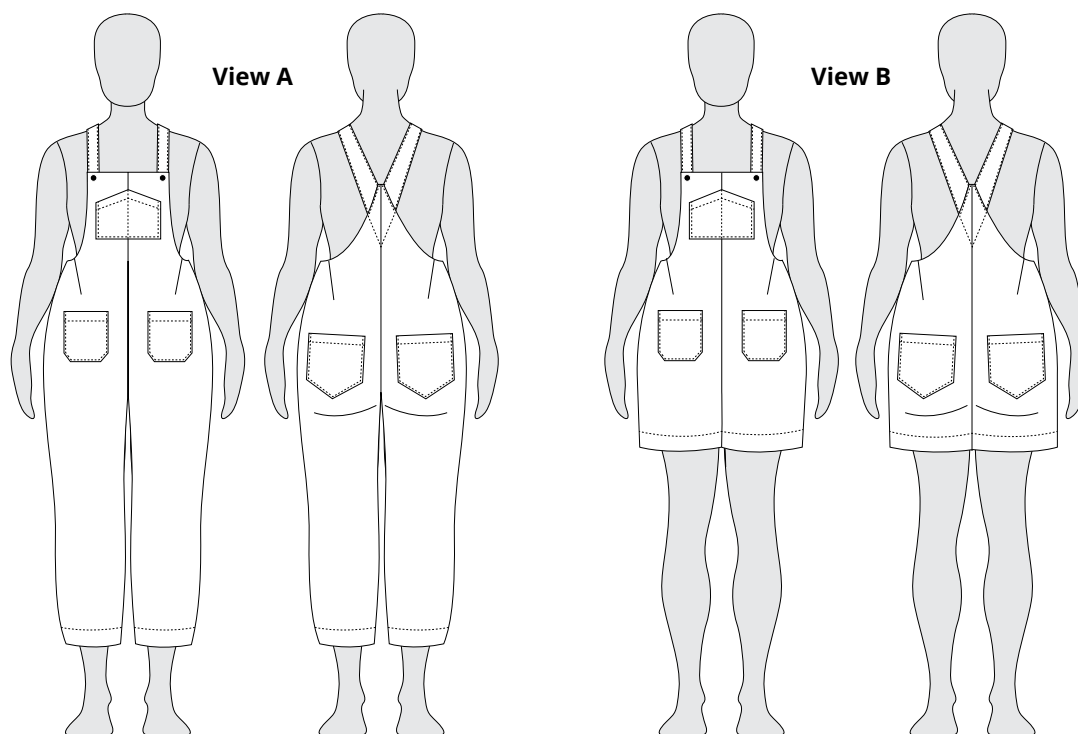
YANTA OVERALLS



Intermediate | Sizes 0-30 | Style #7001

©2019 Helen's Closet Patterns. ALL RIGHTS RESERVED. Not for resale or profit.

Helen's Closet



The Yanta Overalls are laid back, artist-style overalls with a comfortable fit through the waist, hips and legs. These overalls have classic features like a v-shaped back and a pointed chest pocket. The Yanta straps are secured using buttons. Make your Yanta Overalls cropped pants or summery shorts. Both views have front and back patch pockets. Yanta is comfortable, modern, and fun to sew!

Notions

- Thread
- One 5" (13 cm) invisible zipper
- Two 3/4" (2 cm) buttons
- 24" x 20" (60 cm x 50 cm) lightweight interfacing

Sizes

0-30 US

Difficulty

Intermediate

Sewing Skills Learned

- Invisible zipper insertion
- Darts
- Facing finish

Fabric Recommendations

Medium to heavy weight woven fabrics such as cotton twill, denim (up to 10oz), linen, corduroy, and canvas. Crisp lightweight fabrics such as cotton and lightweight linen can also be used for warm-weather overalls. Use more drapery fabrics such as tencel twill, wool crepe, or linen/viscose slub if you want to experiment with a softer, less structured look.

Size Chart

inches

	0	2	4	6	8	10	12	14
High Bust	29	30	31	32	33	34.5	36	38
Full Bust	31	32	33	34	35	36.5	38	40
Waist	24	25	26	27	28	29	30	32
Hips	33	34	35	36	37	38.5	40	42

	16	18	20	22	24	26	28	30
High Bust	40	42	44	46	48	50	52	54
Full Bust	42	44	46	48	50	52	54	56
Waist	34	36	38	40	42	44	46	48
Hips	44	46	48	50	52	54	56	58

centimeters

	0	2	4	6	8	10	12	14
High Bust	73.5	76	78.5	81.5	84	87.5	91.5	96.5
Full Bust	78.5	81.5	84	86.5	89	92.5	96.5	101.5
Waist	61	63.5	66	68.5	71	73.5	76	81.5
Hips	84	86.5	89	91.5	94	98	101.5	106.5

	16	18	20	22	24	26	28	30
High Bust	101.5	106.5	112	117	122	127	132	137
Full Bust	106.5	112	117	122	127	132	137	142
Waist	86.5	91.5	96.5	101.5	106.5	112	117	122
Hips	112	117	122	127	132	137	142	147.5

This pattern has been drafted for a 5'6" tall woman with a B cup bust.
 Information about adjusting this pattern for larger cup sizes is included in the instructions.

Finished Garment Measurements

inches

	0	2	4	6	8	10	12	14	16	18	20	22	24	26	28	30
● Front Bib Width	8.5	8.75	9	9.25	9.5	9.75	10.5	11	11.5	12	12.5	13	13.5	14	14.5	15
■ Waist	32.5	33.5	34.5	35.5	36.5	38	40	42	44	45.5	47.5	49.5	51.5	53.5	55.5	57.5
■ Hips	38	38.75	39.5	40.5	41.5	43	44.5	46	48	50	52	54	56	58	60	62
▲ Length Pants (A)	45.5	45.75	46	46.25	46.75	47	47.5	48	48.5	49	49.5	50	50.5	51	51.5	52
▲ Length Shorts (B)	25.5	25.75	26	26.25	26.5	26.75	27	27.25	27.75	28	28.25	28.75	29	29.25	29.75	30
▲ Inseam Pants (A)	25	25	25	25	25	25	25	25	25	25	25	25	25	25	25	25
▲ Inseam Shorts (B)	4.25	4.3	4.35	4.4	4.45	4.5	4.55	4.6	4.65	4.7	4.75	4.8	4.85	4.9	4.95	5

centimeters

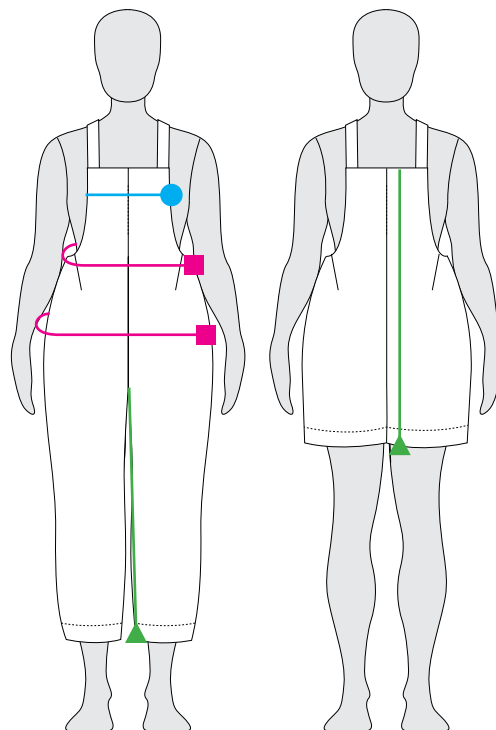
	0	2	4	6	8	10	12	14	16	18	20	22	24	26	28	30
● Front Bib Width	21.5	22	23	23.5	24	25	26.5	28	29	30.5	32	33	34.5	35.5	37	38
■ Waist	82.5	85	87.5	90	92.5	96.5	101.5	106.5	112	115.5	120.5	125.5	131	136	141	146
■ Hips	96.5	98.5	100.5	103	105.5	109	113	117	122	127	132	137	142	147.5	152.5	157.5
▲ Length Pants (A)	115.5	116	117	117.5	118.5	119.5	120.5	122	123	124.5	125.5	127	128.5	129.5	131	132
▲ Length Shorts (B)	65	65.5	66	66.5	67.5	68	68.5	69	70.5	71	72	73	73.5	74.5	75.5	76
▲ Inseam Pants (A)	63.5	63.5	63.5	63.5	63.5	63.5	63.5	63.5	63.5	63.5	63.5	63.5	63.5	63.5	63.5	63.5
▲ Inseam Shorts (B)	11	11	11	11	11.5	11.5	11.5	11.5	12	12	12	12	12.5	12.5	12.5	12.5

Finished bust circumference is not stated because the overalls are open on the sides.

● Bib width is measured from edge to edge across the fullest part of the bust.

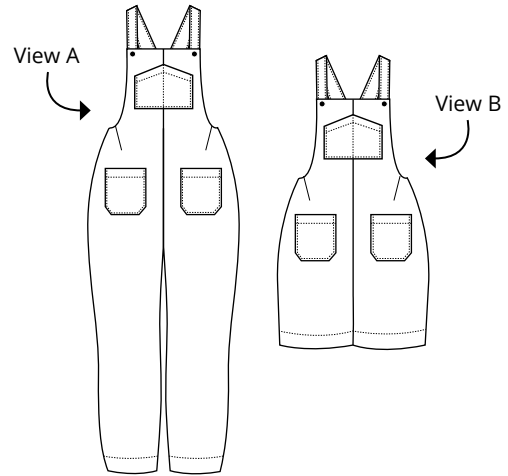
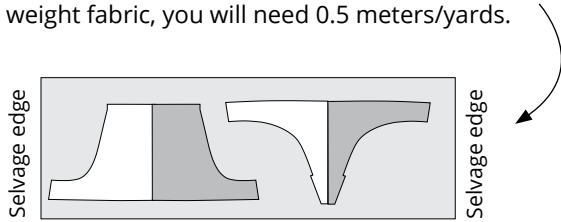
▲ Length is measured from the top of the bib to the bottom of the hem band on the front body and from the crotch down to the hem on the inseam.

■ Waist and hips are measured around the body at the waist and hips.



Fabric Requirements

If you wish to cut the facings out of a lighter-weight fabric, you will need 0.5 meters/yards.



View A (pants view)

yards

	0	2	4	6	8	10	12	14	16	18	20	22	24	26	28	30
57" wide	2.3	2.3	2.3	2.4	2.5	2.7	2.7	2.7	2.8	2.8	2.8	3.1	3.3	3.3	3.3	3.3
45" wide	2.8	2.8	3	3	3.1	3.1	3.5	3.5	3.5	3.7	3.7	3.7	3.8	3.9	4.2	4.4

meters

	0	2	4	6	8	10	12	14	16	18	20	22	24	26	28	30
150 cm wide	2.1	2.1	2.1	2.2	2.3	2.5	2.5	2.5	2.6	2.6	2.6	2.8	3	3	3	3
115 cm wide	2.6	2.6	2.7	2.7	2.8	2.8	3.2	3.2	3.2	3.4	3.4	3.4	3.5	3.6	3.8	4

View B (shorts view)

yards

	0	2	4	6	8	10	12	14	16	18	20	22	24	26	28	30
57" wide	1.7	1.7	1.7	1.7	2	2	2.2	2.2	2.3	2.3	2.3	2.3	2.5	2.5	2.5	2.5
45" wide	2.1	2.2	2.4	2.3	2.3	2.4	2.5	2.5	2.5	2.5	2.6	2.6	2.6	2.6	3.4	3.4

meters

	0	2	4	6	8	10	12	14	16	18	20	22	24	26	28	30
150 cm wide	1.6	1.6	1.6	1.6	1.8	1.8	2	2	2.1	2.1	2.1	2.1	2.3	2.3	2.3	2.3
115 cm wide	1.9	2	2.2	2.1	2.1	2.2	2.3	2.3	2.3	2.3	2.4	2.4	2.4	2.4	3.1	3.1